

MP - 1 Inch Mini Printers Series

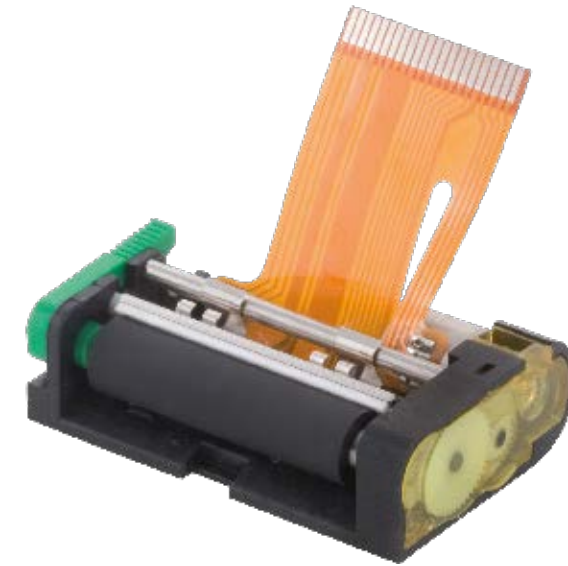
Low power - ultra compact printer

Specifications

MP 105

MP 106

Printing method	Thermal	Thermal
Number of dots	192	256
Resolution (dots/mm)	8	8
Printing width (mm)	24	32
Paper width (mm)	38 +0/-1	38 +0/-1
Max. paper thickness (µm)	80	80
Paper loading	Automatic	Automatic
Printing speed (mm/s)	80	80
Paper detection	Opto sensor	Opto sensor
Temperature detection	Thermistor	Thermistor
Head-up detection	Not available	Not available
Voltage range (Logic / Head)	5 ± 5% V 4.2 - 8.5V	5 ± 5% V 4.2 - 8.5V
Dot resistance (Ohm)	142 ± 4%	140 ± 3%
Energy per dot (mJ)	0.31	0.31
Stepper motor (Ohm)	Biopolar (20)	Biopolar (20)
Weight (g)	30	30
Printing life/reliability	50km/100M pulses	50km/100M pulses
Operating temperature (°C)	-5 to 50 non cond.	-5 to 50 non cond.
Operating humidity (%)	20 to 85 non cond.	20 to 85 non cond.
Dimensions (WxDxH mm)	32 x 48 x 13.8	32 x 48 x 13.8



38 mm

Features

- Ultra compact design - height only 13 mm and weight only 30 g
- 1 inch paper width
- No loose wiring - a single flex-cable houses all wiring
- Ergonomic design - centered paper path allows uniform and aesthetic housing design
- High reliability in an extremely small size
- Prints high quality characters at speed up to 80 mm/s
- Foot print compatible with shuttle type

Applications

- Calculators
- Data terminal devices
- EFT POS
- Hand held terminals
- Measuring instruments and analysers
- Medical equipment
- Portable printers and terminals
- Taxi meters

Options

- Chip Set
- CSM05
- Temp. extention
- Controller Board