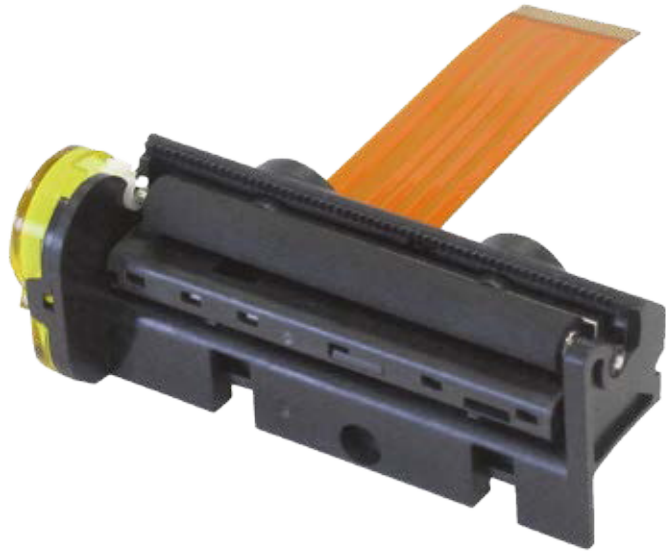


SS 200 Super Small Series



58 mm



Options

- Chip Set
- CSM05
- Gear PRO™

Applications

- Automotive
- Calculators
- Data terminal devices
- Digital tachometers
- EFT POS
- Fiscal printers
- Hand held terminals
- Portable printers and terminals
- Measuring instruments and analysers
- Taxi meters

Features

- Ultra light (26 grams)
- Easy paper loading and Easy Door Opening System
- Prints from 3V
- 30% power savings on V4
- New printhead technology gives very sharp and clear printout
- One single, small pitch FPC
- Print speed up to 100 mm/s for LV mechanism and up to 110 mm/s for HS

Specifications

	SS205-V4-LV	SS205-V4-HS
Print method	Thermal	Thermal
Number of dots	384	384
Resolution (dots/mm)	8	8
Printing width (mm)	48	48
Paper width (mm)	58	58
Max. paper thickness (μ)	80	80
Paper loading	Easy loading	Easy loading
Printing speed (mm/s)	100	110
Paper detection	Opto sensor	Opto sensor
Temperature detection	Thermistor	Thermistor
Head/Cover-open detection	Opto sensor	Opto sensor
Voltage range (Logic Head)	3.0-5.25 V 3.0-9.5 V	3.0-5.25 V 5.5-9.5 V
Dot resistance (Ohm)	116 ±10%	165 ±10%
Energy per dot (mJ)	0.18	0.18
Stepper motor (Ohm)	Bipolar (11)	Bipolar (19)
Weight (g)	26	26
Life/reliability	100km/200M pulses	100km/200M pulses
Operating temperature (°C)	-25 to +75 °C	-30 to +70 °C
Operating humidity (%)	10 to 90 non cond.	10 to 90 non cond.
Dimensions (WxDxH mm)	68x24x26	68x24x26