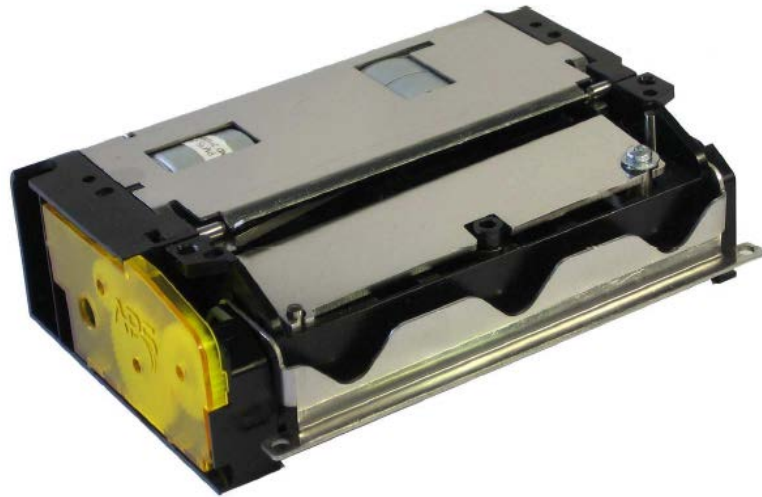


HSP 3000 Series

Ultra High Speed - Heavy Duty Thermal Printers



86 mm



Options

- Controller Board
- Label / black mark detection sensor
- Double Opto
- 300 dpi

Applications

- Ticketing (paper width adapted to railway ticketing industry)
- ATM
- Data terminals
- Gaming and lottery
- Gas pumps
- Kiosks
- Parking meters
- Vending machines

Features

- 86 mm paper width adapted for the railway ticketing industry
- +50% resolution, i.e. 12 dots/mm
- Cuts up to 220 µm (10 mils)
- Over 200 mm/s printing speed
- 200 km printing life
- 2 million cuts life (full & partial)
- High-speed printing with historic control
- Wide operating temperature range
- Near end-of-paper sensor interface
- Barcode support
- Kiosk and Easy loading versions*

Specifications

HSP3512-86-KS/EL

Printing method	Thermal
Number of dots	960
Resolution (dots/mm)	12
Printing width (mm)	80
Paper width (mm)	86
Max. paper thickness (µm)	63 and 190
Paper loading	Easy Loading
Printing speed (mm/s)	up to 200 (7.9 ips)**
Paper detection	Opto sensor
Temperature detection	Thermistor
Cover-open detection	Mechanical switch
Voltage range (Logic / Head)	5V or 3.3V 24 typical, 26.5 V max.
Dot resistance (Ohm)	800 ± 3 %
Energy per dot (mJ)	0.17
Weight (g)	450
Printing life/reliability	200 km/100M pulses
Cutter life	2M cuts
Operating temperature (°C)	-20 to +60 °C
Operating humidity (%)	10 to 90 (no condensation)
Dimensions (WxDxH mm)	125x82.5x35.7
Cutter speed (default mode)	220 µm in 550 ms
Cutter speed (high speed)	80 µm in 240 ms
Cutter detection	Mechanical switch
Black mark sensor position	Left or right
Printer version	Kiosk or Easy Loading*



*3512-86-KS Kiosk version



*3512-86-EL Easy Loading version

**under certain driving conditions & using recommended paper