

# LPM2200-LC

## Options

- 300 dpi
- Controller Board

## Features

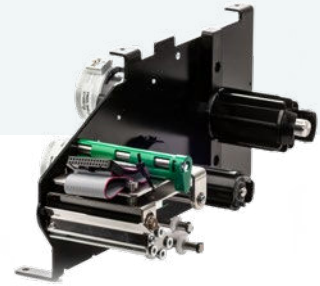
- Open-frame printer suitable to be inserted in labeling units or weighing machines.
- Two different motors are used for paper motion: one for direct driving of paper or labels under the print-head and the other to rewind label support.
- Up to 110 mm/s printing speed.
- Available in 300 DPI

## Applications

- ID Automation
- Medical Equipment

Specifications	LPM2200-LC
Print method	Thermal
Number of dots	448
Resolution (dots/mm)	8
Max Printing speed (mm/s)	110
Print resolution (dpi)	200
Sensor	Paper, Paper End
Media Type	Ticket, Label
Paper width (mm)	40 to 63
Printing width (mm)	56
Min. paper thickness (µm)	63
Max. paper thickness (µm)	170
Paper loading	Easy Loading
Media Roll Diameter (mm)	120
Dimensions (WxDxH mm)	280 x 130 x 124.5 (basic module)
Weight (g)	1000
Operating Voltage	24V
Voltage range (Logic/Head)	5V or 3.3V / 24 V ± 10%
Paper detection	Photo interrupter
Temperature detection	Thermistor
Connector Type	FC26-B02N1G (ribbon cable conn.)

# LPM2200-LC



## Specifications

## LPM2200-LC

Operating temperature

From 0° to 50°C

Storage temperature

From -25° to +70°C

Operating humidity

10% to 90% (no condensing)

TPH

100 km / 100M pulses

Certifications

ISO 9001:2015, ISO14001, ISO13485:2016 certified - RoHS compliant